

# DC150-1/-2 Sample Concentrator



///DC150-1



///DC150-2

## ///Introduction

Fast efficient sample concentration suitable for a variety of tube controlled by PID with high precise temperature. The gas delivery needles are independent, which could control gas separately to ensure sample concentration a good uniformity. The height of the sample concentrators gas reservoir is located on an adjustable stand for accurate height control. This flexible combination of blocks makes the instrument compatible with most sample vessels.

## ///Features

- Independent needles avoid cross contamination
- Every gas volume adjustable
- Needles can work combined or alone
- Convenient to adjust gas for samples
- Accurate temperature, large temperature range, easy to calibrate
- Safe to use due to the height adjustable stand
- Stand rod with scale for accurate height control



Independent needles



Rod with scale



Display



Timer

## ///Product parameters

Model	DC150-1	DC150-2	Model	DC150-1	DC150-2
Temperature Control Range	RT +5°C ~150°C		Nitrogen Flow	0~12L/min	
Temperature Set Range	0°C ~150°C		Pressure	≤ 0.2MPa	
Heating Up Rate	≤ 30min (20°C to 150°C )		Dimension (W×D×H)	220 x290 x540 (mm)	
Temperature Stability @40°C	±0.3°C		Block quantity	1	2
Temperature Stability @100°C	±0.5°C		Power	200W	400W
Temperature Stability @120°C	±1°C		Weight	3.9kg	5kg
Timer	0~99h59min				



D1A



D2A



D3A



D4A



D5A



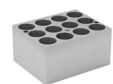
D6



D7



D8



D9



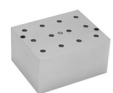
D10



D11



D12



D13A



D14A



D15A



D16A



Gas flow controller for option

### Optional Blocks

Type	Tube diameter	Capacity	Size mm	Type	Tube diameter	Capacity	Size mm
D1A	6 mm (φ6.5×47)	12	96.5X76.5X50	D9	20 mm (φ20.5×47)	12	96.5X76.5X50
D2A	7 mm (φ7.5×47)	12	96.5X76.5X50	D10	26 mm (φ26.5×47)	8	96.5X76.5X50
D3A	10 mm (φ10.5×47)	12	96.5X76.5X50	D11	28 mm (φ28.5×47)	6	96.5X76.5X50
D4A	12 mm (φ12.5×47)	12	96.5X76.5X50	D12	38mm (φ38.5×47)	3	96.5X76.5X50
D5A	13 mm (φ13.5×47)	12	96.5X76.5X50	D13A	0.2ml centrifuge tube (φ6.1×17)	12	96.5X76.5X50
D6	15 mm (φ15.5×47)	12	96.5X76.5X50	D14A	0.5ml centrifuge tube (φ8×23)	12	96.5X76.5X50
D7	16 mm (φ16.5×47)	12	96.5X76.5X50	D15A	1.5ml centrifuge tube (φ10.8×31)	12	96.5X76.5X50
D8	19 mm (φ19.5×47)	12	96.5X76.5X50	D16A	2ml centrifuge tube (φ10.8×31)	12	96.5X76.5X50

# DC150-1A Sample Concentrator

## Introduction

Designed for Microplate with unique heating aluminum block which can transmit heat to sample quickly . Fast efficient sample concentration controlled by PID with high precise temperature, with display, Timer, beep alarm functions.



## Features

- Independent needles avoid cross contamination
- Convenient to adjust gas for samples
- Accurate temperature up to 150°C
- Safe to use due to the height adjustable stand
- Stand rod with scale for accurate height control



Rod with scale



Display



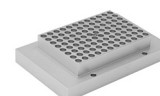
Gas chamber Good sealing

## Product parameters

Model	DC150-1A	Block quantity	1
Temperature control range	RT+5°C ~150°C	Timer	0~99h59m
Temperature Set Range	0°C ~150°C	Nitrogen Flow	0~12L/min
Heating Up Rate	≤ 30min (20°C to150°C)	Pressure	≤ 0.2MPa
Temperature stability @40°C	≤ ±0.3°C	Power	400W
Temperature stability @100°C	≤ ±0.5°C	Dimension (W×D×H)	220x290x460 (mm)
Temperature stability @120°C	≤ ±1°C		

## Optional Blocks

Type	Tube diamter	Size (W×D×H)
D17	96×0.2ml PCR plate,8×0.2ml strip	153x96.5x33.5 (mm)
D18	Elisa plate, deep well plate, cell culture plate	153x96.5x22.5 (mm)



D17



D18



Gas flow controller for option

# DC150-1B Visible Sample Concentrator

## Introduction

Fast efficient sample concentration controlled by PID with high precise temperature, with display, timer, beep alarm functions. The heating aluminum block which can transmit heat to sample quickly, make the device an ideal replacement of the traditional water bath concentrator. This sample concentrator widely used in fields of drug testing, hormone analysis, liquid phase and spectrometry and etc.



## Features

- Large temperature range, high efficient
- Unique designed block with slots for sample observation
- Independent needles avoid cross contamination
- Device can be used in fume hood to handle poison gas
- Built-in over heat system
- LED display, easy to operate



Block with slots for observation



Rod with scale



Display



Independent needles

## Product parameters

Model	DC150-1B	Temperature Stability @100°C	≤ ±0.5°C	Needles Length	150mm
Temperature Control Range	RT +5°C ~150°C	Temperature Stability @120°C	≤ ±1°C	Gas Chamber adjustable distance	280mm
Temperature Set Range	0°C ~150°C	Block quantity	1	Pressure	≤ 0.2MPa
Heating Up Rate	≤ 30min (20°C to 150°C)	Timer	0 ~99h59m	Power	400W
Temperature Stability @40°C	≤ ±0.3°C	Nitrogen Flow	0~12L/min	Dimension (W×D×H)	220x290x540 (mm)

## Optional Blocks

Type	Capacity	Block hole diameter	Size (mm)
K1	φ10 mmx 12	φ10.5 mmx 47	153 x 96.5 x 50
K2	φ12 mmx 12	φ12.5 mmx 47	153 x 96.5 x 50
K3	φ13 mmx 12	φ13.5 mmx 47	153 x 96.5 x 50
K4	φ15 mmx 12	φ15.5 mmx 47	153 x 96.5 x 50
K5	φ16 mmx 12	φ16.5 mmx 47	153 x 96.5 x 50
K6	φ19 mmx 12	φ19.5 mmx 47	153 x 96.5 x 50
K7	φ20 mmx 12	φ20.5 mmx 47	153 x 96.5 x 50



K1



K2



K3



K4



K5



K6



K7